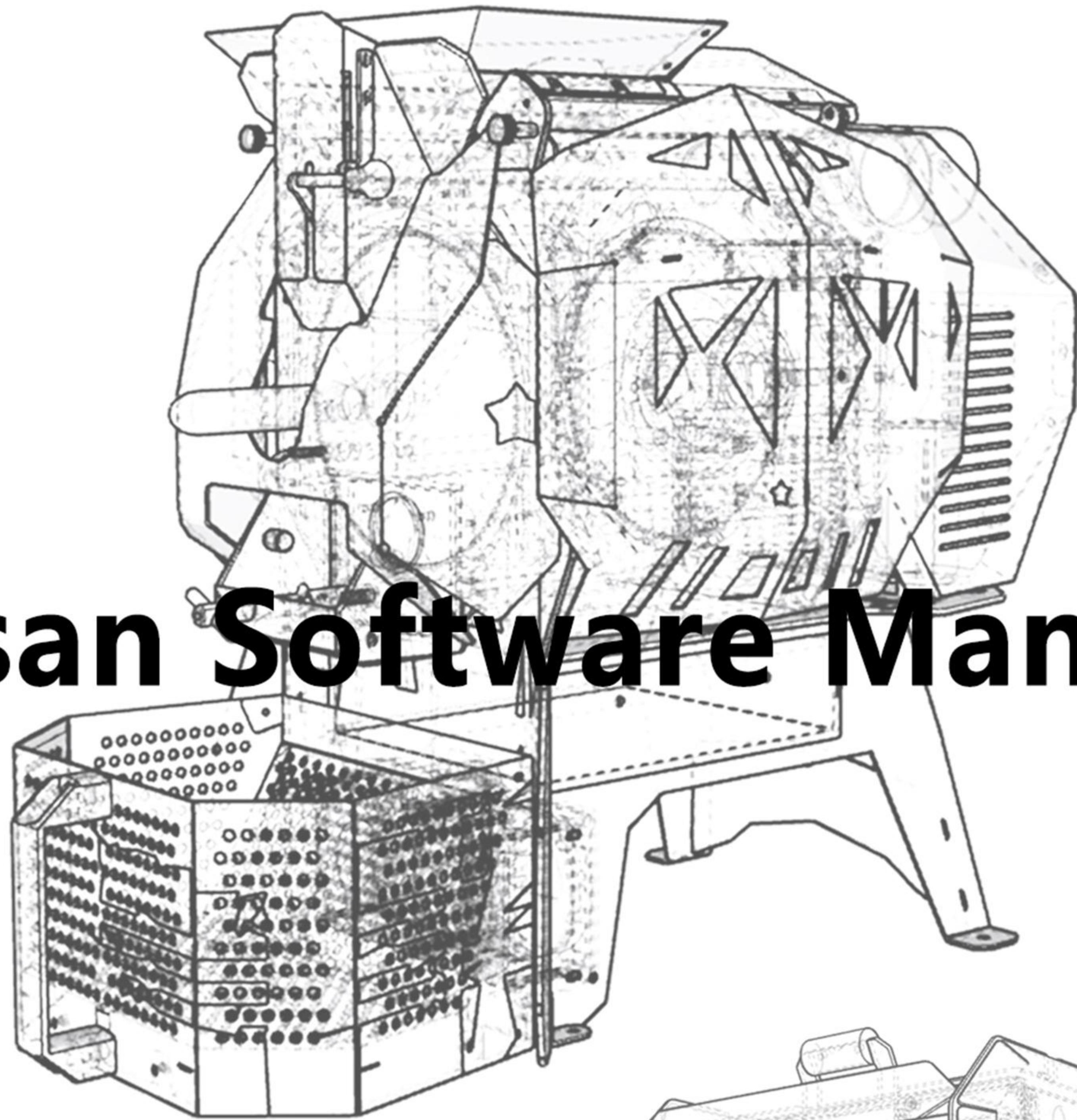
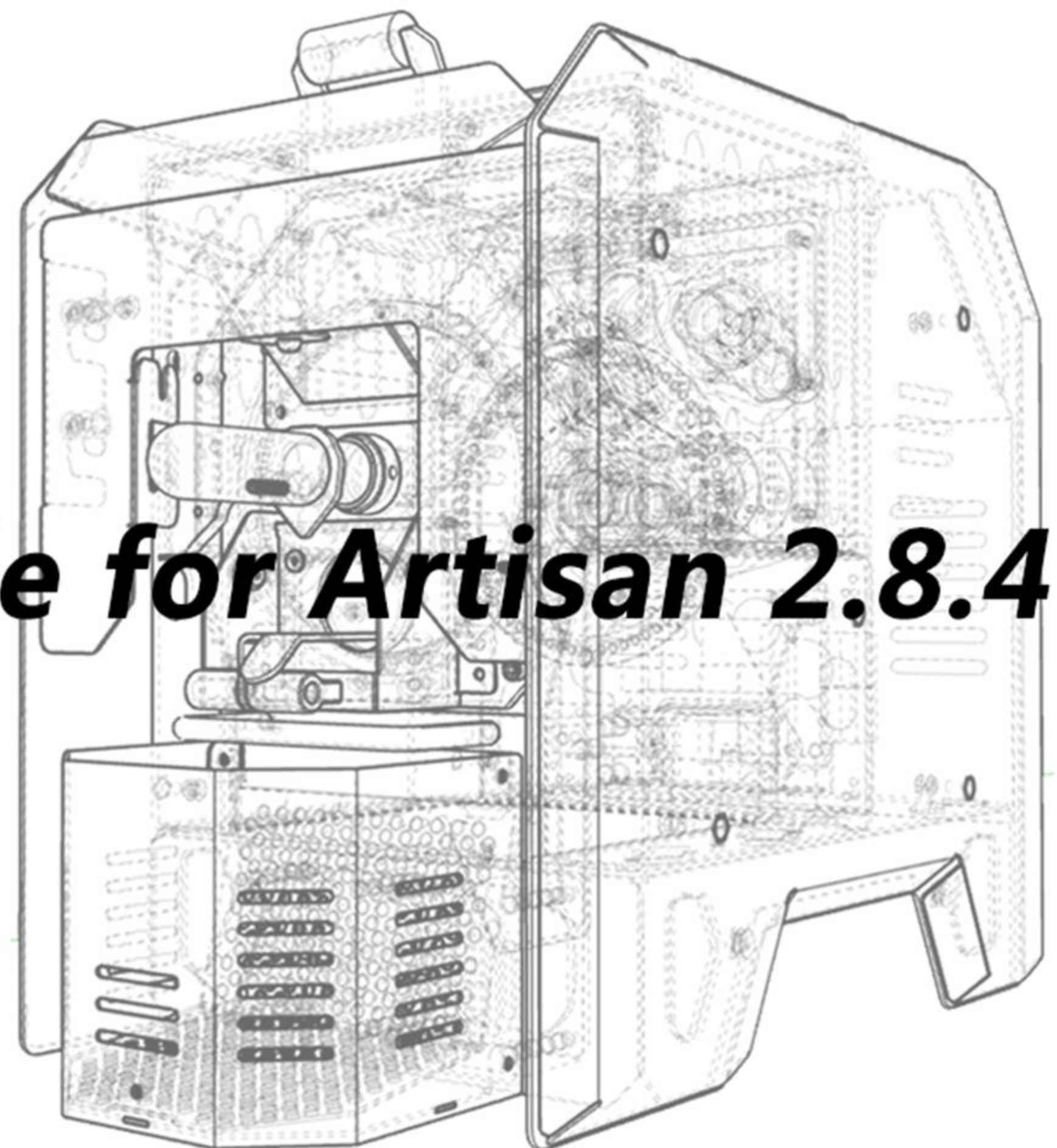


Kaleido[®]



Artisan Software Manual

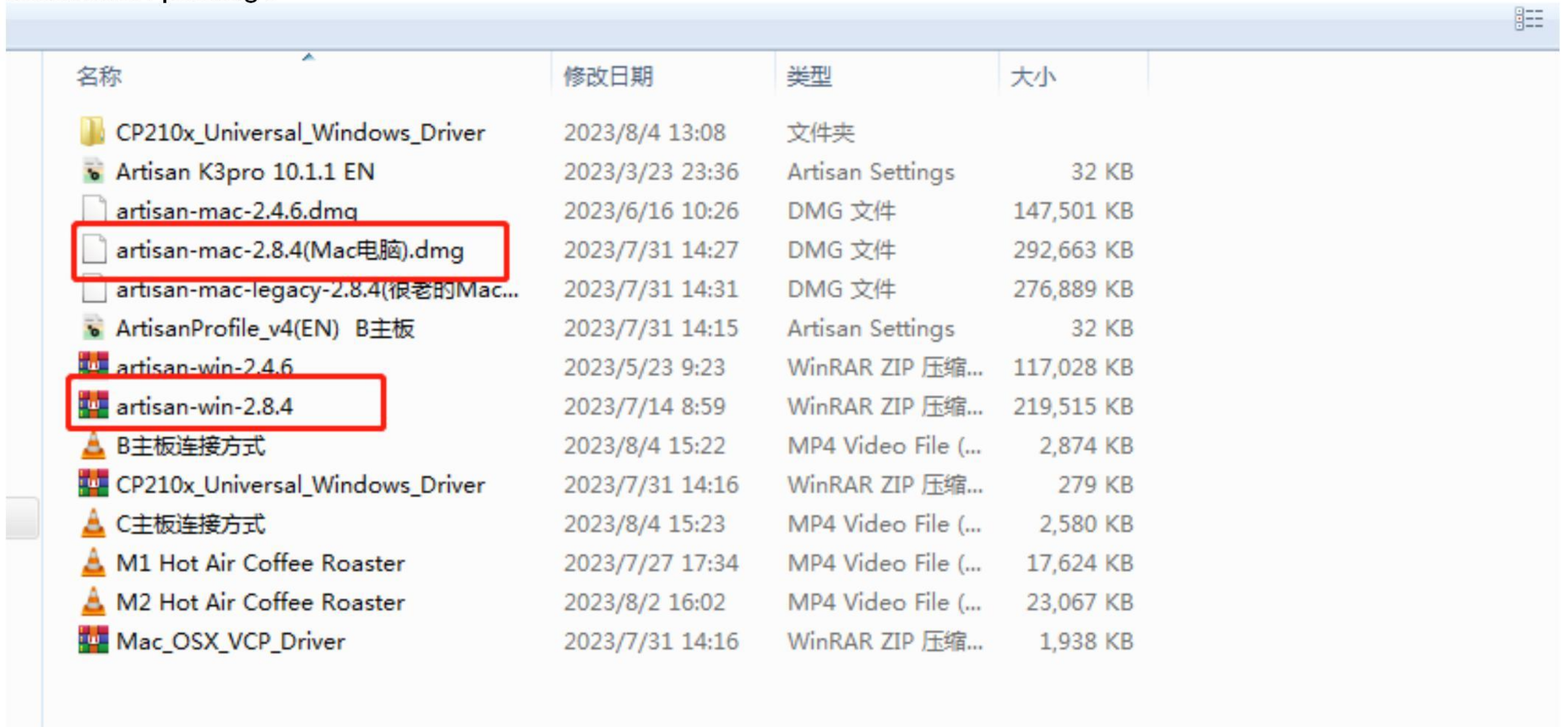
Applicable for Artisan 2.8.4



Wuhan Kaleidoscope Technology Co.,Ltd

I. Install Artisan 2.8.4 To The PC

1. Ask your seller to send you Artisan 2.8.4 installation package



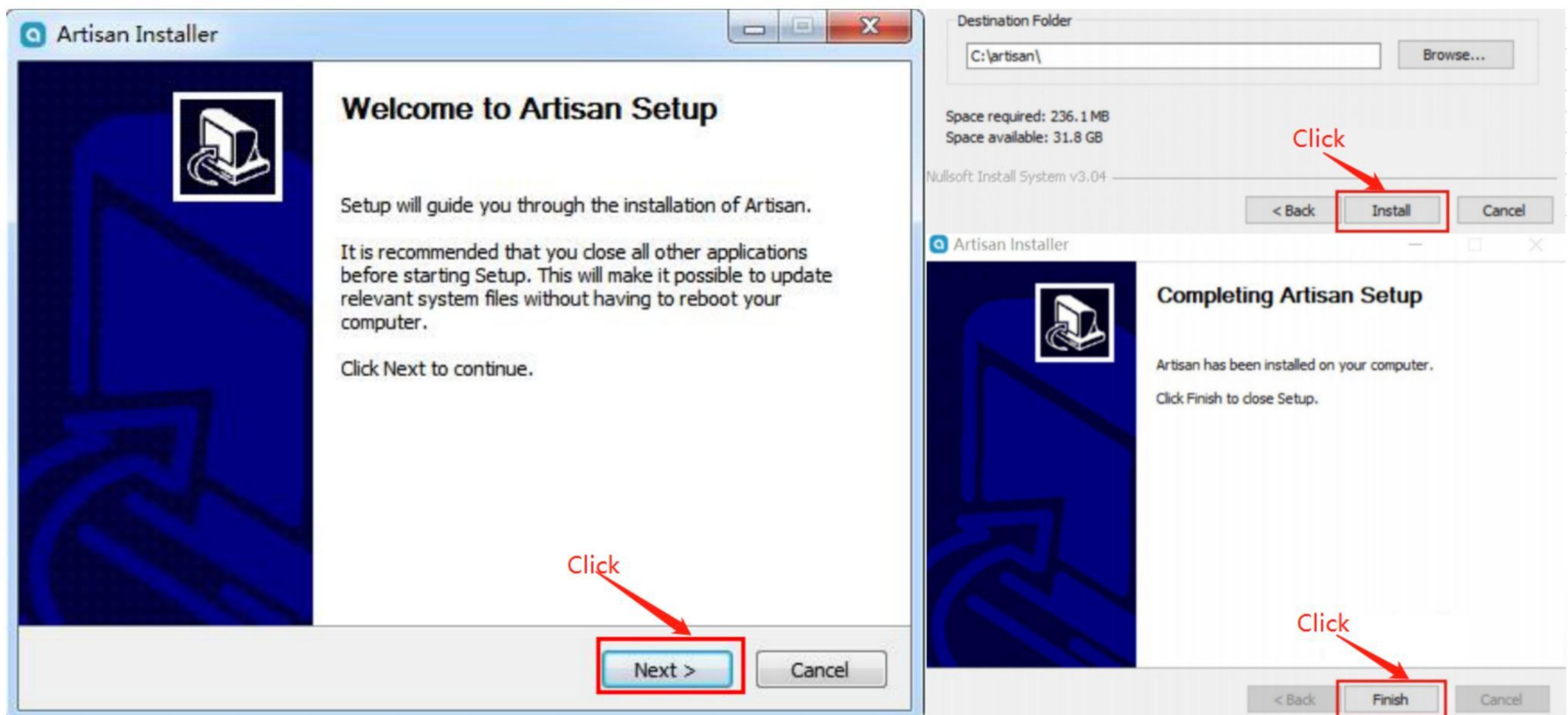
名称	修改日期	类型	大小
CP210x_Universal_Windows_Driver	2023/8/4 13:08	文件夹	
Artisan K3pro 10.1.1 EN	2023/3/23 23:36	Artisan Settings	32 KB
artisan-mac-2.4.6.dmg	2023/6/16 10:26	DMG 文件	147,501 KB
artisan-mac-2.8.4(Mac电脑).dmg	2023/7/31 14:27	DMG 文件	292,663 KB
artisan-mac-legacy-2.8.4(很老的Mac...	2023/7/31 14:31	DMG 文件	276,889 KB
ArtisanProfile_v4(EN) B主板	2023/7/31 14:15	Artisan Settings	32 KB
artisan-win-2.4.6	2023/5/23 9:23	WinRAR ZIP 压缩...	117,028 KB
artisan-win-2.8.4	2023/7/14 8:59	WinRAR ZIP 压缩...	219,515 KB
B主板连接方式	2023/8/4 15:22	MP4 Video File (...	2,874 KB
CP210x_Universal_Windows_Driver	2023/7/31 14:16	WinRAR ZIP 压缩...	279 KB
C主板连接方式	2023/8/4 15:23	MP4 Video File (...	2,580 KB
M1 Hot Air Coffee Roaster	2023/7/27 17:34	MP4 Video File (...	17,624 KB
M2 Hot Air Coffee Roaster	2023/8/2 16:02	MP4 Video File (...	23,067 KB
Mac_OSX_VCP_Driver	2023/7/31 14:16	WinRAR ZIP 压缩...	1,938 KB

2. Unzip the installation package to your computer, Click "Setup" to install the Artisan 2.8.4 software



名称	修改日期	类型	大小
LICENSE	2023/6/21 1:24	文本文档	35 KB
README	2023/6/21 1:24	文本文档	4 KB
Setup-Artisan-2.8.4.0	2023/6/21 2:27	应用程序	219,808 KB

3. Click "Next" → "Install", Wait until it install well → "Finish"

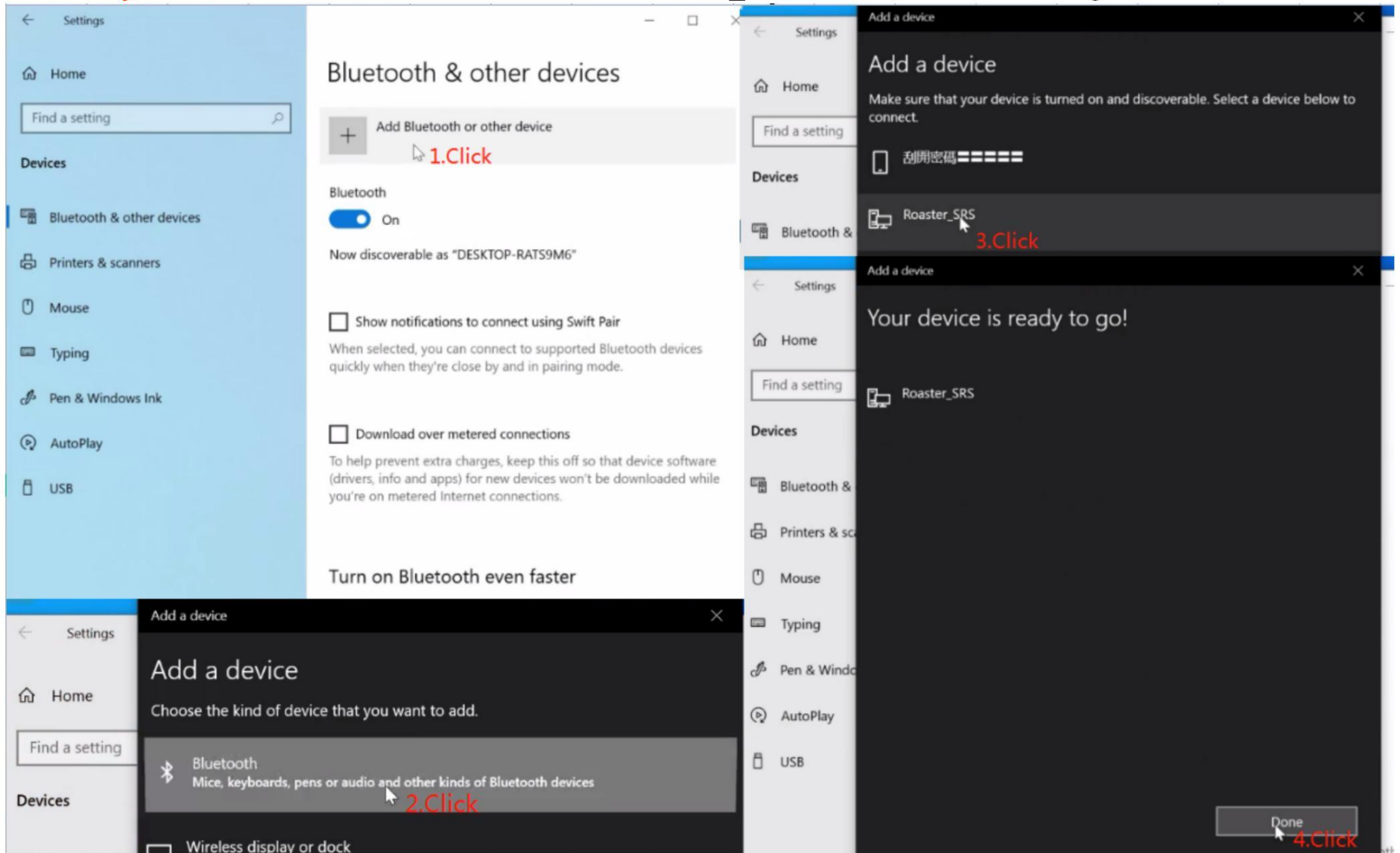


II. Bluetooth Connection

1. Add Bluetooth device → Click "Bluetooth"

⇒ **Pro Version Roaster:** Find Bluetooth "Roaster_SRS", then connecting

⇒ **Dual System Version Roaster:** Find Bluetooth "Kaleido_M1/2/6/10", then connecting

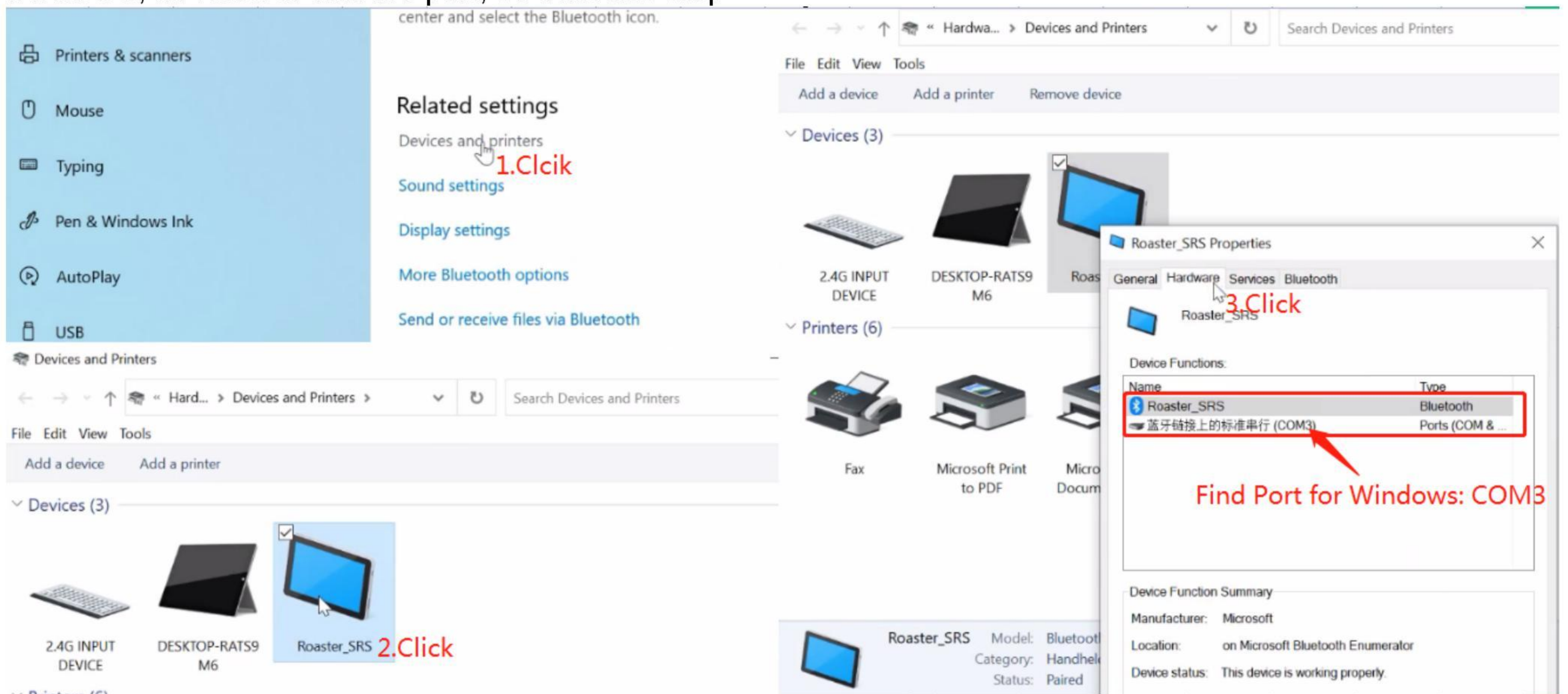


2. If Windows, Click "Devices and printers" to find the Device, then to find the "Port" for Windows system computer:

⇒ "Roaster_SRS" for Pro Version Roaster

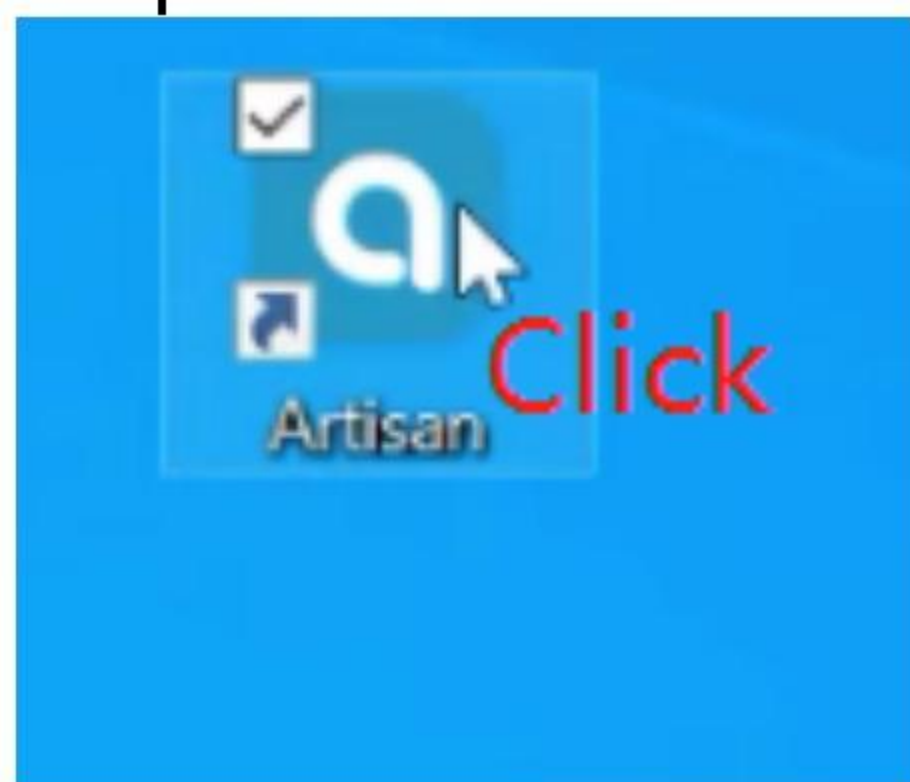
⇒ "Kaleido_M1/2/6/10" for Dual System Version Roaster

If macOS, no need to find the port, so omit this step



III. Config in Artisan 2.8.4

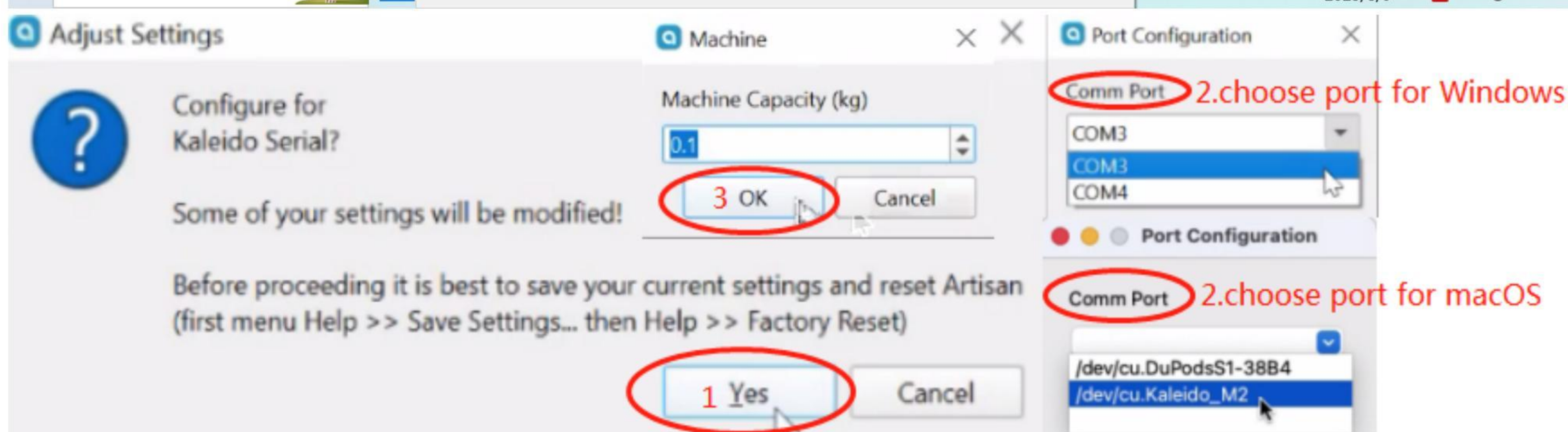
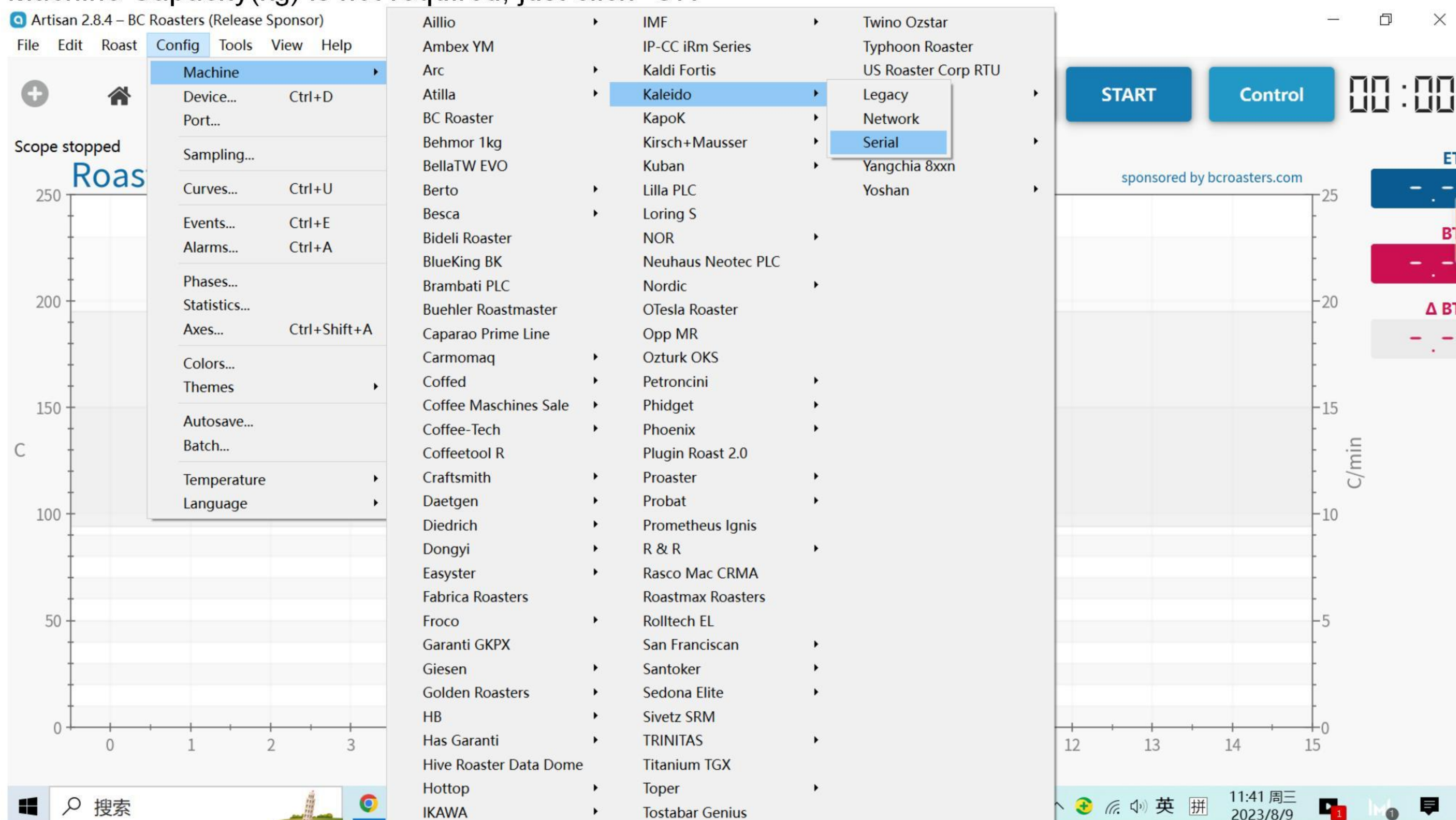
1. Open the Artisan 2.8.4



2. If Windows, Click Config→Machine→Kaleido→Serial→Yes→Port "COM3"; Choose the port that found in the "Devices and printers"

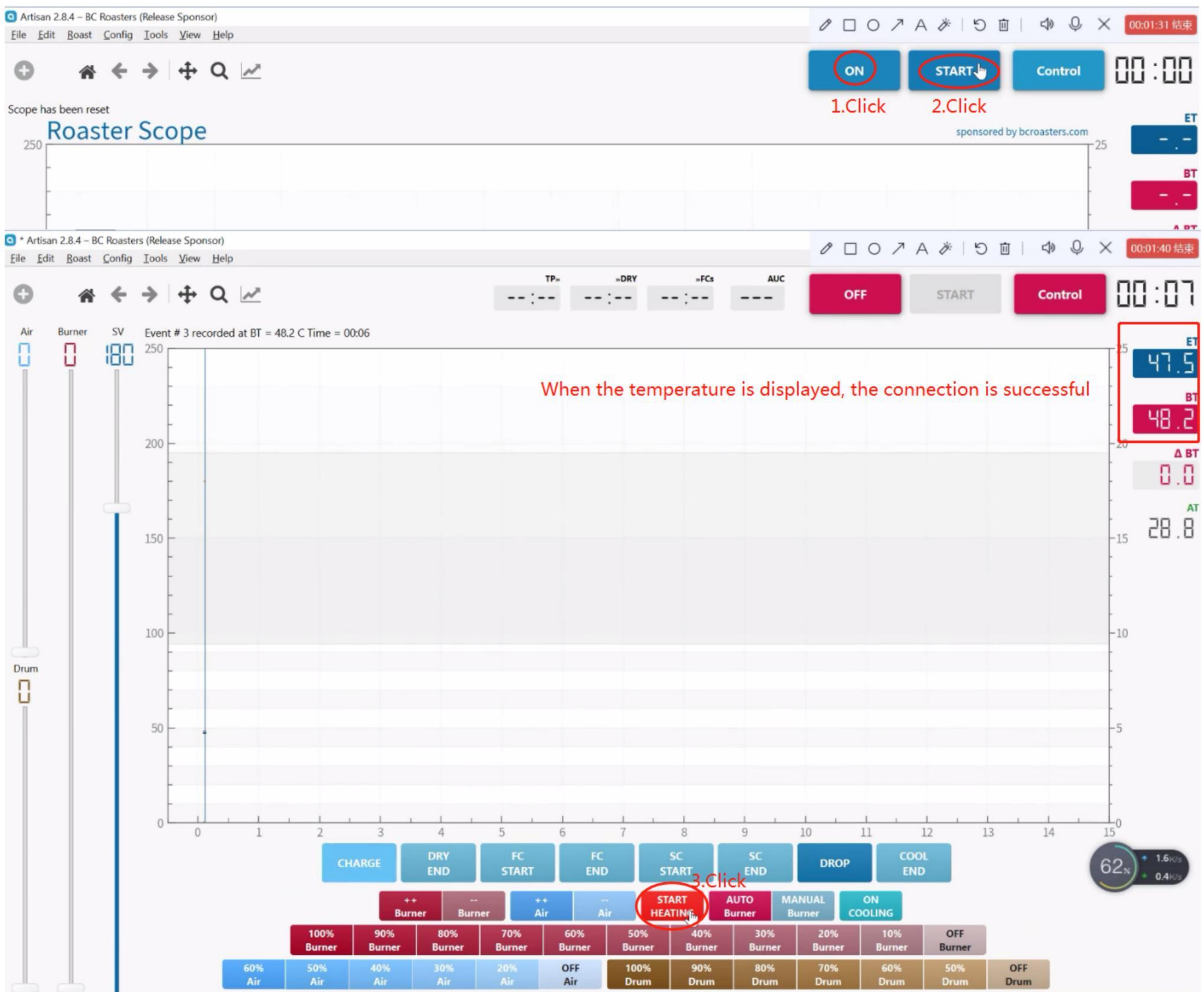
If macOS, Click Config→Machine→Kaleido→Serial→Yes→Port "/dev/cu.Kaleido_M1/2/6/10"; Choose the port in the Artisan (Comm Port)

Machine Capacity(kg) is not required, just click "OK"

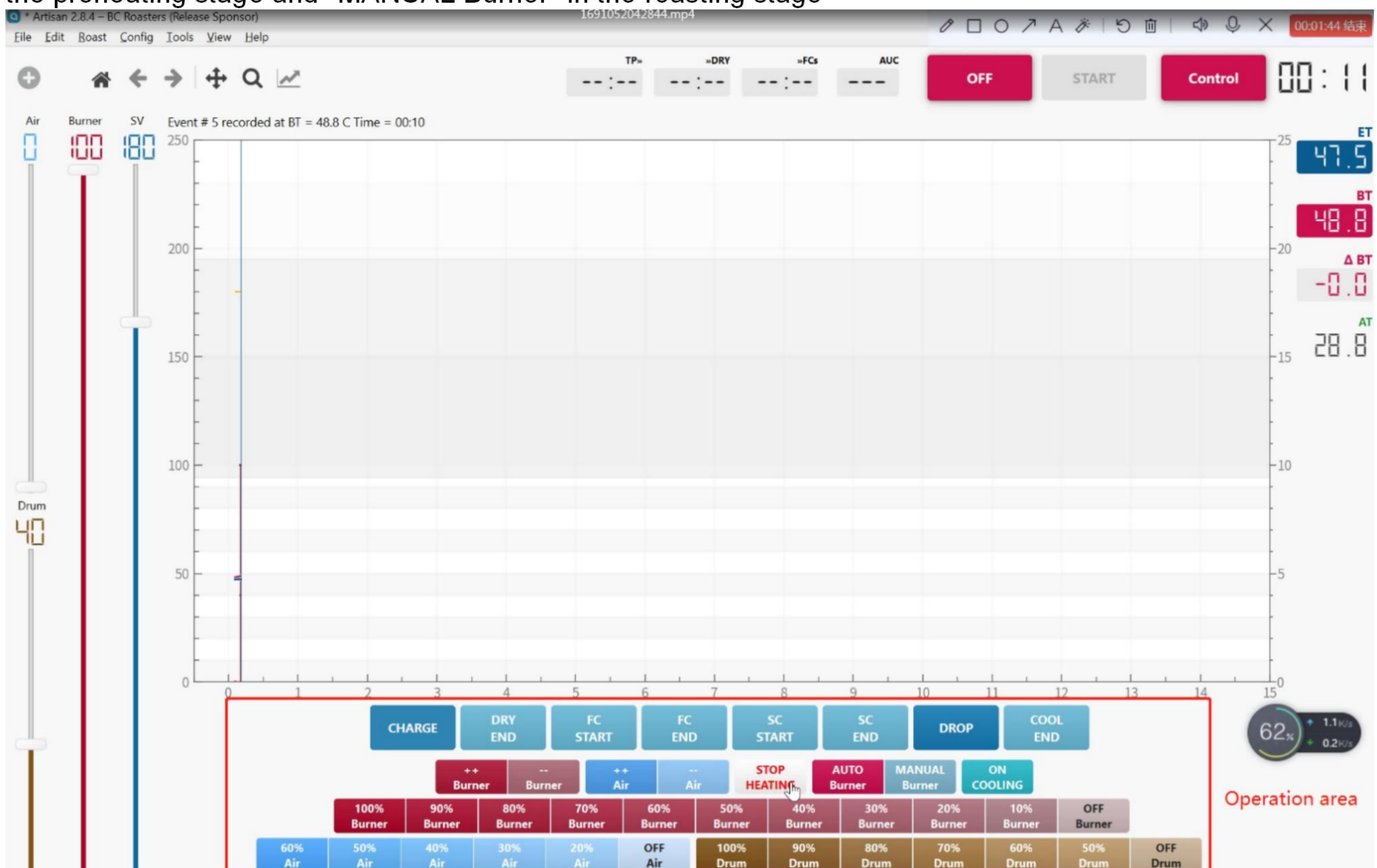


IV. Manual Roasting

1. Click "ON"→"START"→"START HEATING", When the temperature is displayed, the connection is successful. If the temperature is not displayed, reconnect the port.



2. Then adjust the Burner,Air,Drum,Cooling to your own roasting needs. We recommend "AUTO Burner" in the preheating stage and "MANUAL Burner" in the roasting stage



3. Example: The instructions for getting started are as follows:

⇒ **Preheating stage**: Drag the "SV" to 180°C → Click "AUTO Burner" and "Drum 100"

(SV: Maximum temperature setting). Wait until the preheating temperature reaches 180°C and the roaster is fully preheated.

⇒ **Roasting stage**: Drag "SV" to 215°C

→ Pour in green beans"

→ Click "CHARGE" at the same time

→ "Burner 40" and "Damper 40"

→ When the BT reaches the turning port, Click "Burner 80"

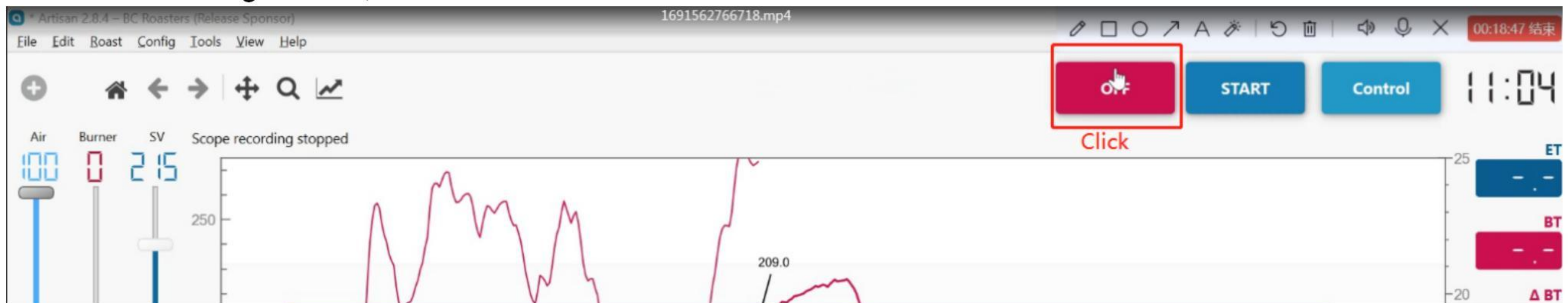
→ When the coffee bean starts to brown, Click "DRY END" and "Burner 60"

→ When First Crack, Click "FC START", "Burner 20", "Air 80"

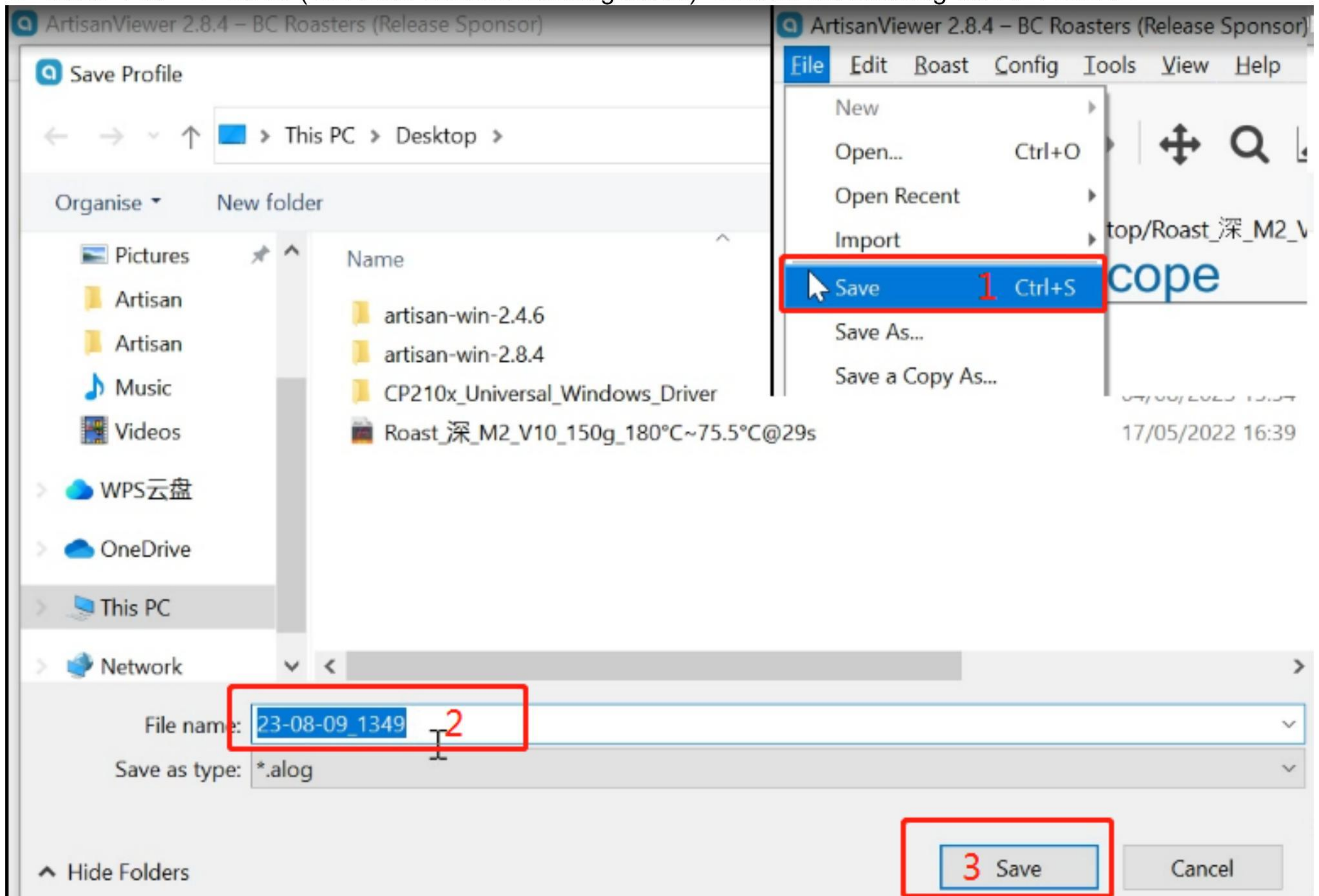
→ When first crack finish, click "OFF Burner, OFF Air", then click "DROP". (The cooling fan turns on automatically)

→ Once it's cooled down, Click "OFF COOLING" (ON COOLING and OFF COOLING are the same one button)

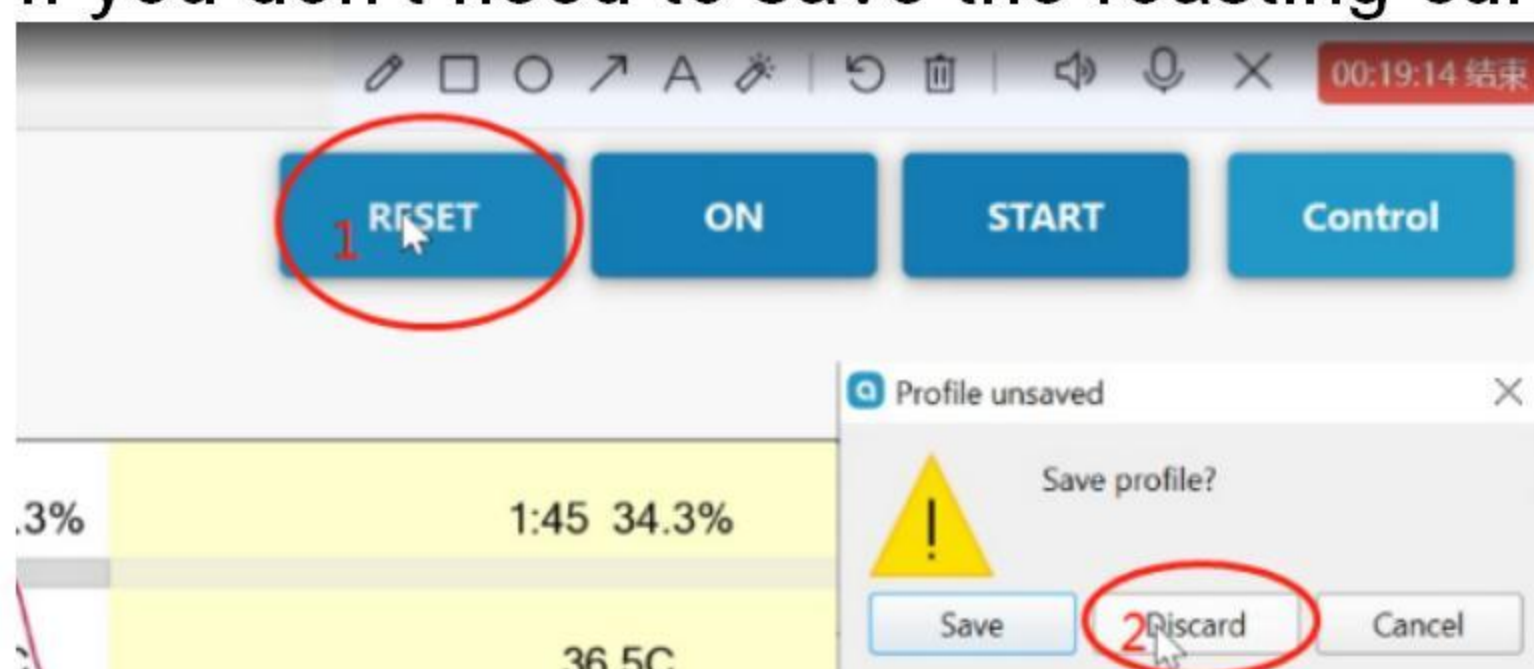
→ When Roasting is over, click "OFF."



4. Click "File" → "Save" (Save the manual roasting curve) → Name the roasting curve → "Save".



If you don't need to save the roasting curve, Click "RESET" → "discard"

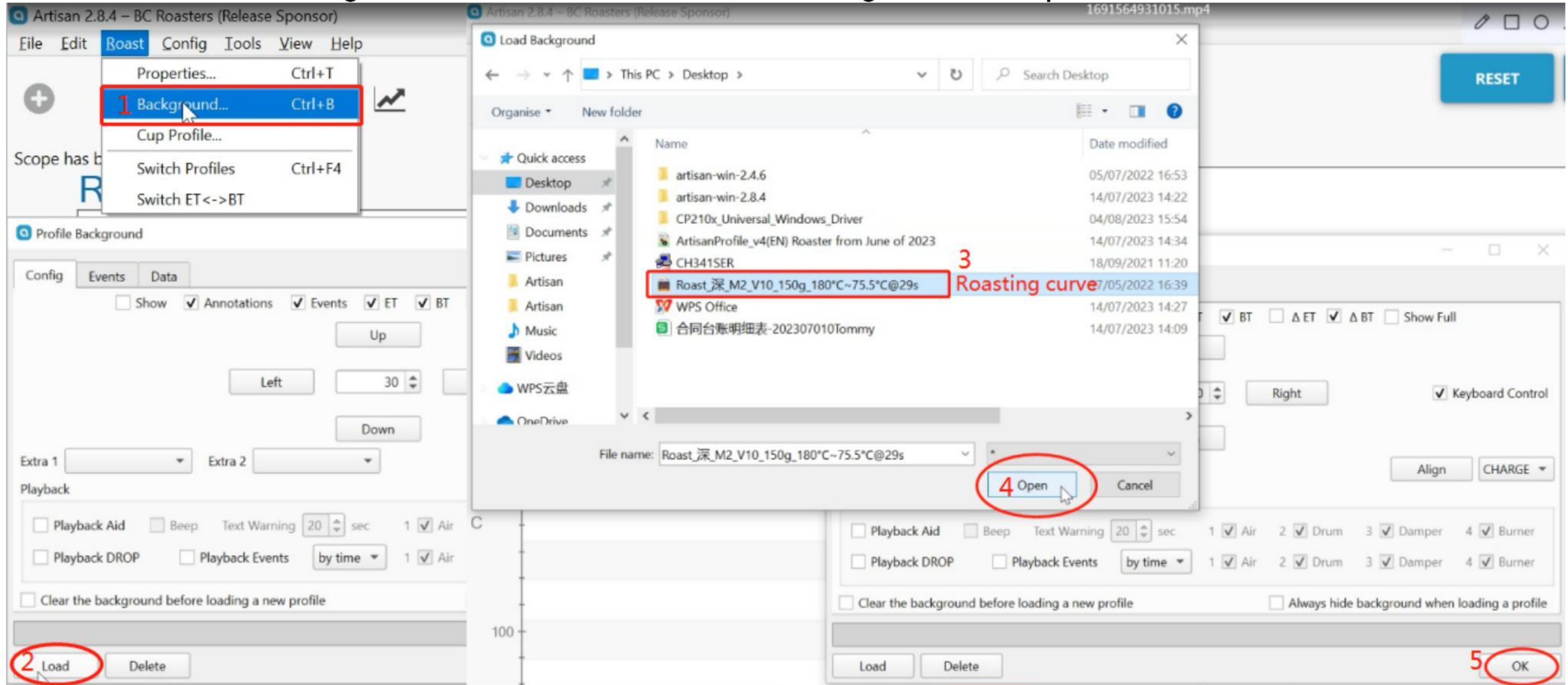


Note:

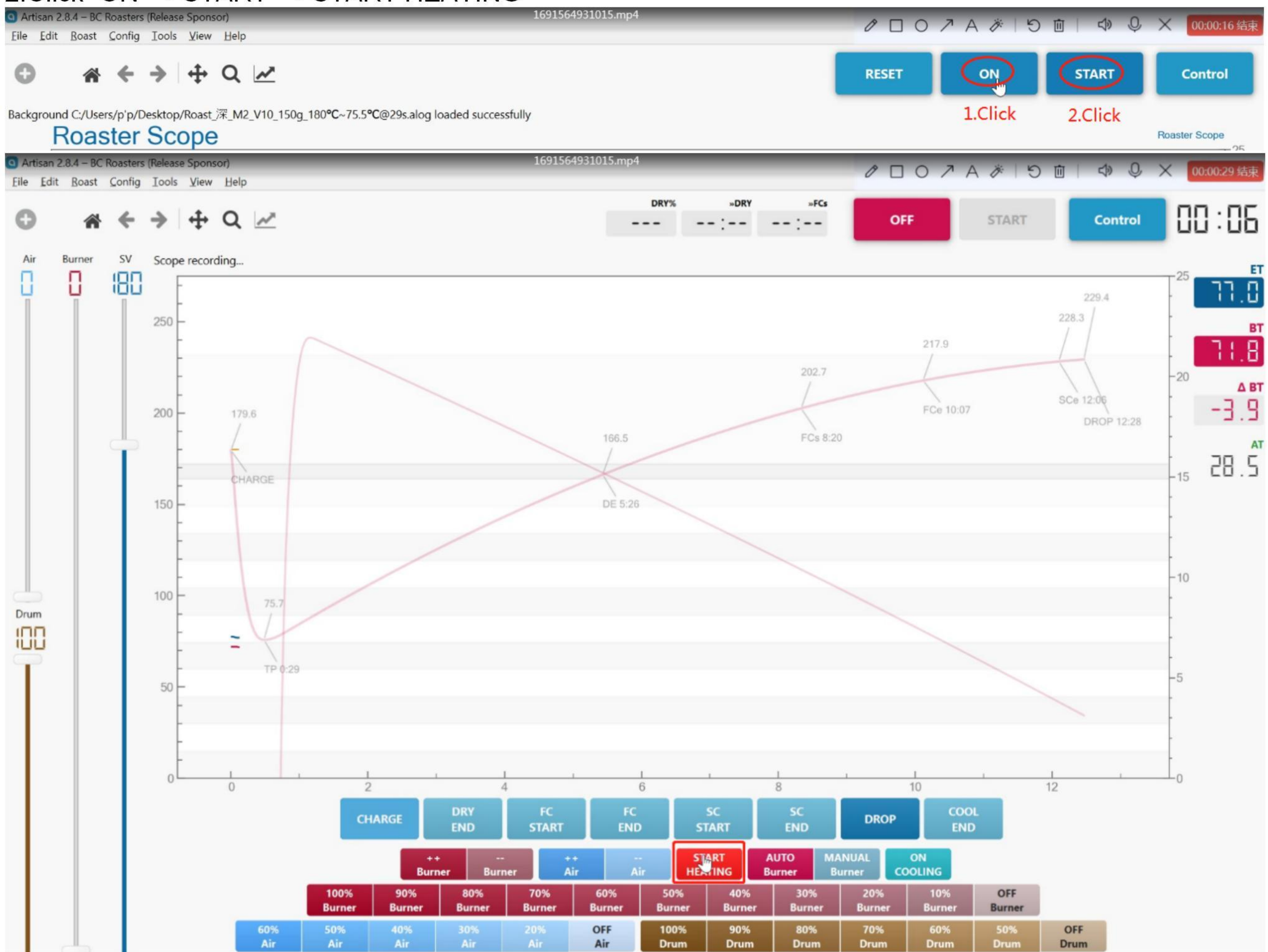
If turn off the roaster, it is better to let the temp is lower than 50°C, you click "Air 100" and "Drum 100" speed up cooling down.

V. Automatic Roasting

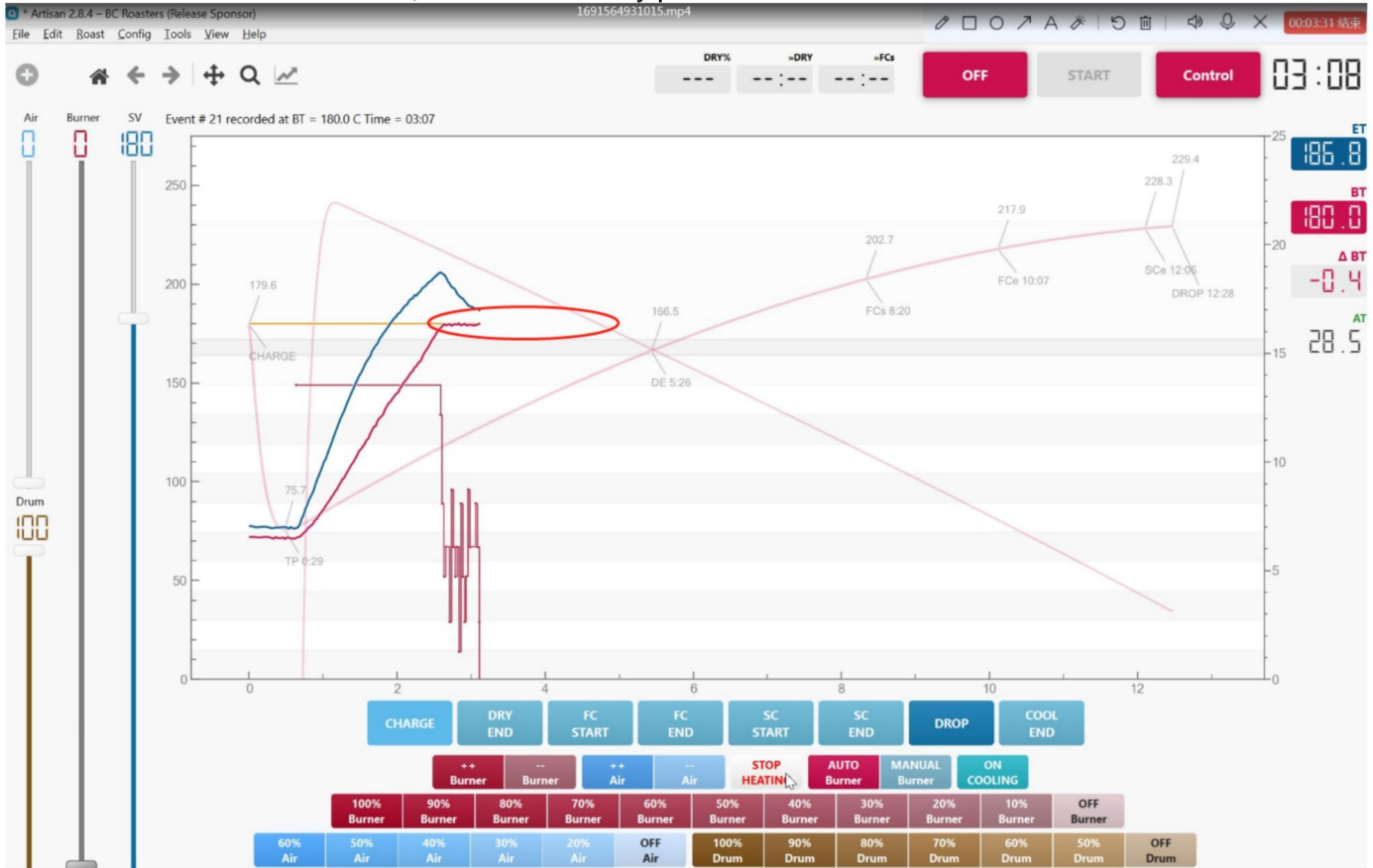
1. Click "Roast" → "Background" → "Load" → Choose Roasting curve → "Open" → "OK"



2. Click "ON" → "START" → "START HEATING"



3. After the BT curve is stabilized, the roaster is fully preheated.



4. → Pour in green beans → Click "CHARGE" at the same time.



5. → Then roasting will be automatic according to the Roasting curve, until "DROP" (Turn on the cooling fan while automatically turning off the Burner) → Once it's cooled down, Click "OFF COOLING" → When Roasting is over, click "OFF."

Automatic roasting throughout the process, no need to adjust the Burner, Air and Drum. They will be automatically adjusted according to the BT.

Note:

If turn off the roaster, it is better to let the temp is lower than 50°C, you click "Air 100" and "Drum 100" speed up cooling down.